

KW Touch Server Install

What is KeyWatcher Touch Server?

The server is the piece of the KeyWatcher Touch system that brings the database, the client application and KW Touch systems together. In a way the server is the “brains” of the system.

Minimum PC Requirements

- Windows XP Professional, SP3
- 1GB of Ram
- 2GB of free HD Space
- Pentium 4 processor

Recommended PC Requirements

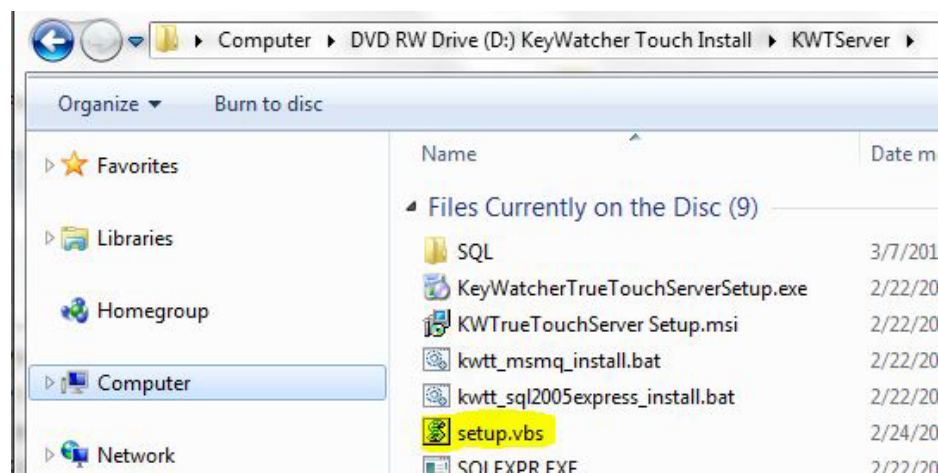
- Windows 7 Professional
- 8GB of Ram
- 10GB of free HD Space
- Intel Core i5 processor (or equivalent)

The KWT Server requires the following components:

- MSMQ (Microsoft Message Queue)
 - SQL Server Express or Existing SQL Server (V2005 or higher)
 - Addition of a local user on the PC – “KWTouch”
- ✓ An Administrative login will be required to install this software
 - ✓ A local user account will be created for the service to run under, allowing for secure access to the server by other computers with the TrueTouch client software installed.
 - ✓ MSMQ is required and will be automatically installed
 - ✓ The server can be physical PC or VM that is always on and connected to the network

Installation Steps

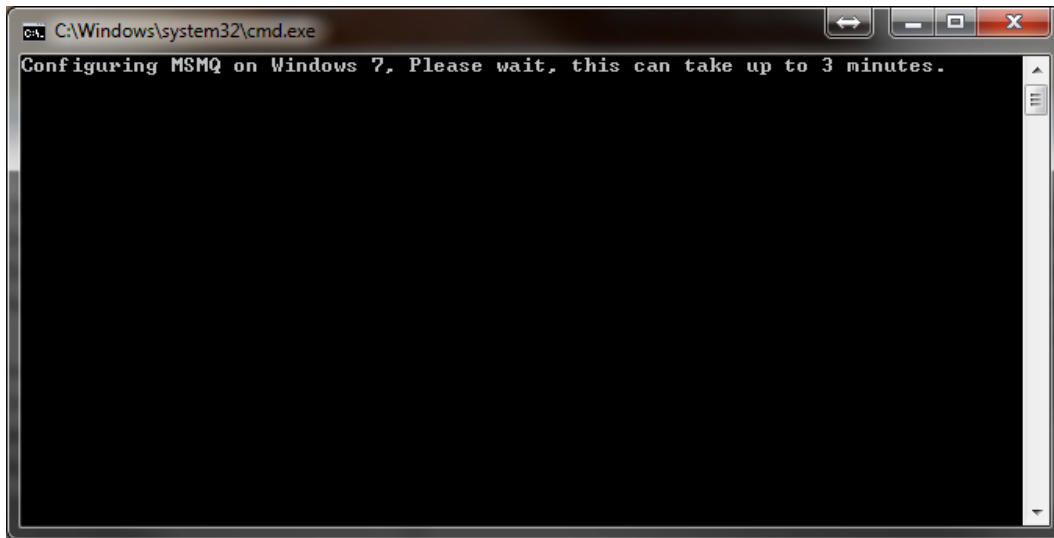
To begin the installation, click the button in the CD Menu that says: “Install KeyWatcher Touch Server”. If you experience an error when clicking this button, then you can manually start the installation by navigating to the CD/DVD ROM, and then double click the KWTServer folder. Double click on the “setup.vbs” file to begin the installation. (See below)



**** If the PC is running Windows XP ****

- First, click the “Install MSMQ(XP Only)” button
- Once that completes, then click the “Install KWTouch Server (XP Only) button

Please note: The following command prompt screen that may come up is related to the installation of the MSMQ feature within Windows. This may take up to 5 minutes to complete.



At this point, the following screen should be displayed:



1. Click “Next” after selecting “I agree”.

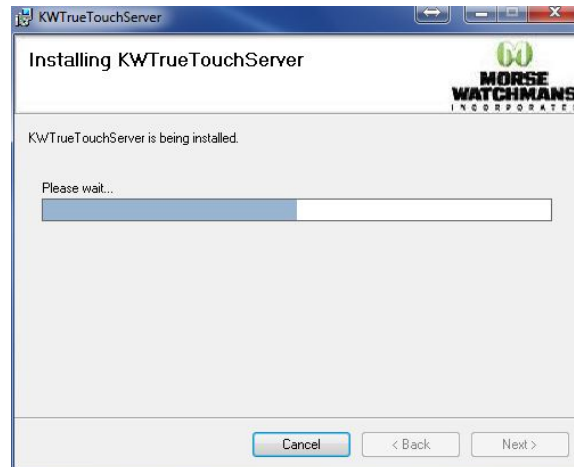
2. Click Next again, the following screen will be displayed:



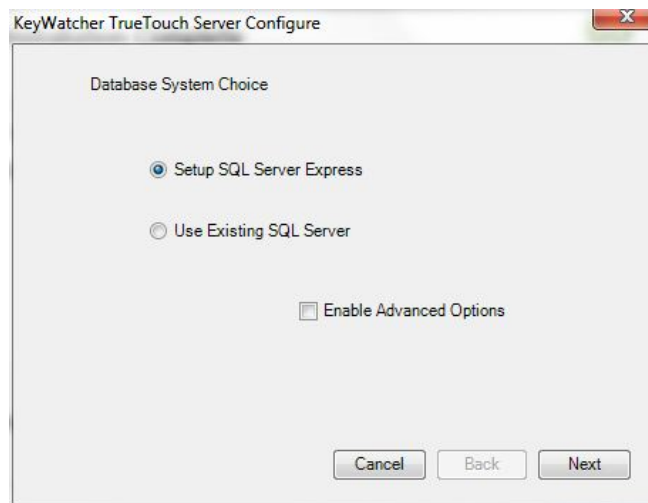
3. If the path of where the software is to be installed needs to be changed, do that here. It is recommended to install the software in this location and to not change it.
4. Click "Next". At the following screen, click next to begin the installation



5. The following screen will be shown during installation:

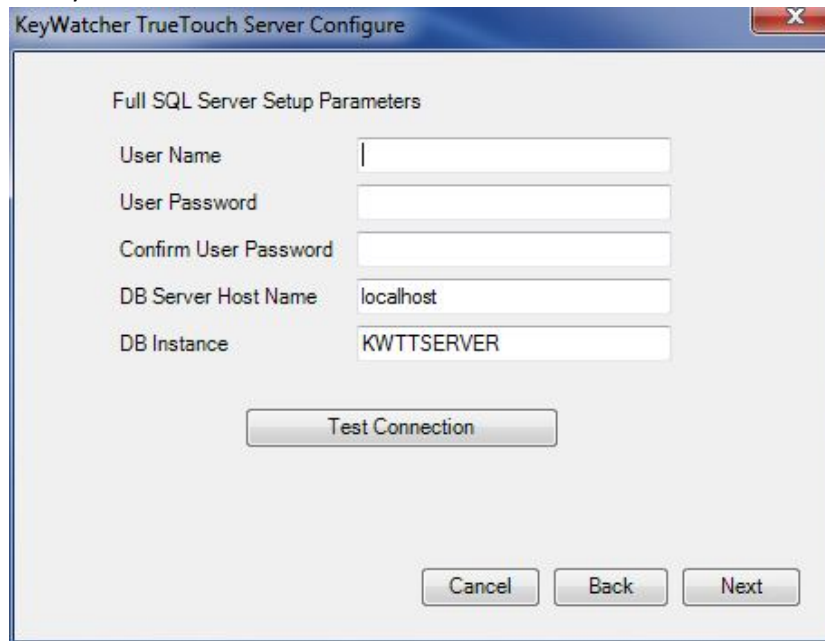


6. Once the installation of the KW Touch Server software has completed, setup will continue and a configuration screen will be shown, as seen below:



SQL Express or Use Existing SQL Server:

- a. Select “Setup SQL Express” if a SQL server is not available or if the server is going to operate solely off the PC (default) – Refer to Step 7
 - b. Select “Use Existing SQL Server” if you wish to use an existing SQL server on your network. Refer to Step 8
 - c. “Enable Advanced Options” – Checking this will allow a different user account to be utilized by the server. Also the port used can also be changed. (It is not recommended to change the port!)
7. “Setup SQL Express” If you choose this option, select it, then click “Next”. Go to Step 9
8. “Use Existing SQL Server” – If selecting this option, click “Next”. The following screen will be shown:

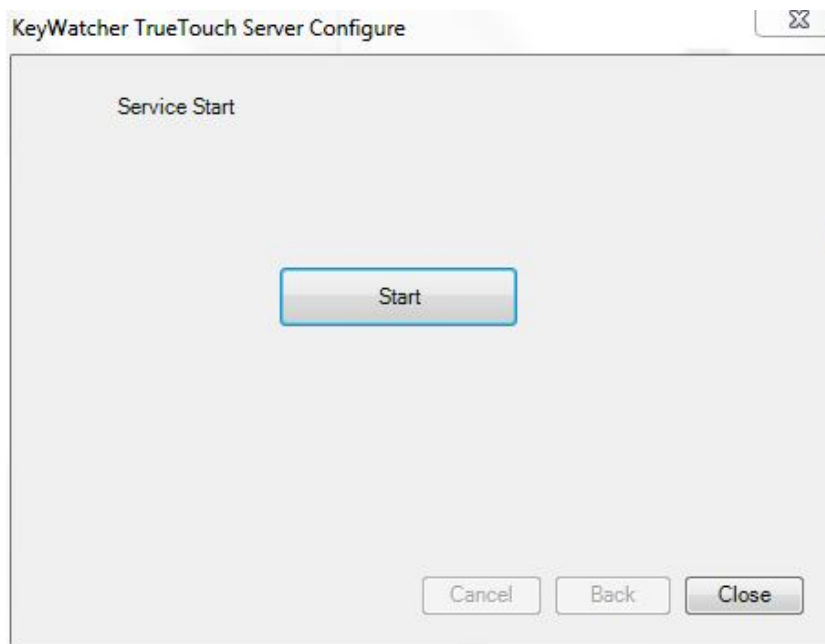


The image shows a Windows dialog box titled "KeyWatcher TrueTouch Server Configure". It contains a section titled "Full SQL Server Setup Parameters" with the following fields:

- User Name: []
- User Password: []
- Confirm User Password: []
- DB Server Host Name: localhost
- DB Instance: KWTTSERVER

Below the fields is a "Test Connection" button. At the bottom of the dialog are "Cancel", "Back", and "Next" buttons.

- a. Fill in all requested information. Make sure the specified user name already exists on the SQL Server (If not it will need to be added!). This user will then need to be given DBO privileges to the two databases "KeyWatcherMain" and "KeyWatcherHistory" that are created. The DB Instance field can be left blank unless used by your SQL Server.
 - b. Click "Test Connection" to verify the connection (Screen will pop up with SQL Server Info), then click "Next".
9. Setup will now finish. Setup will install SQL Express if that option was specified, and once complete will show the following screen:



The image shows a Windows dialog box titled "KeyWatcher TrueTouch Server Configure". It contains a section titled "Service Start" with a "Start" button. At the bottom of the dialog are "Cancel", "Back", and "Close" buttons.

10. Click the “Start” button to start the KW Touch Server service. If the service successfully starts, the tray icon will show:



11. Click “Close” for both windows that are open – Installation of the KW Touch Server is complete!