

Software Installation

Once the KW Touch Systems have been powered up, the KW Touch Server, and KW TrueTouch applications will need to be installed.

Start out by placing the software CD in your CD ROM drive. When the auto play prompt comes up, click the option that says “Run KeyWatcher Touch CD Menu”.



After clicking that option, the following screen should appear:



It is important that KW Touch Server is installed and properly running before installing the KW TrueTouch client application.

- **If the KW Touch Server is already installed, then move on to the KW TrueTouch client installation.** (Pg. 25)

KW Touch Server Install

What is KeyWatcher Touch Server?

The server is the piece of the KeyWatcher Touch system that brings the database, the client application and KW Touch systems together. In a way the server is the “brains” of the system.

Minimum PC Requirements

- Windows XP Professional, SP3
- 1GB of Ram
- 2GB of free HD Space
- Pentium 4 processor

Recommended PC Requirements

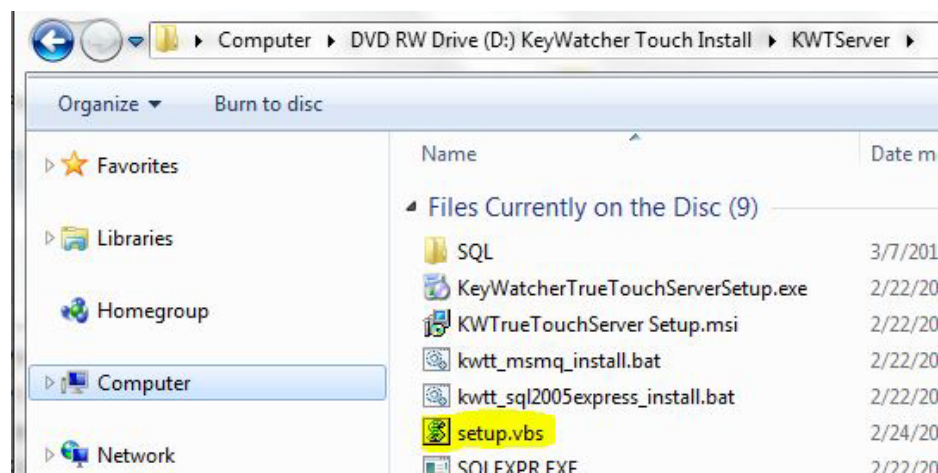
- Windows 7 Professional
- 8GB of Ram
- 10GB of free HD Space
- Intel Core i5 processor (or equivalent)

The KWT Server requires the following components:

- MSMQ (Microsoft Message Queue)
 - SQL Server Express or Existing SQL Server (V2005 or higher)
 - Addition of a local user on the PC – “KWTouch”
- ✓ An Administrative login will be required to install this software
 - ✓ A local user account will be created for the service to run under, allowing for secure access to the server by other computers with the TrueTouch client software installed.
 - ✓ MSMQ is required and will be automatically installed
 - ✓ The server can be physical PC or VM that is always on and connected to the network

Installation Steps

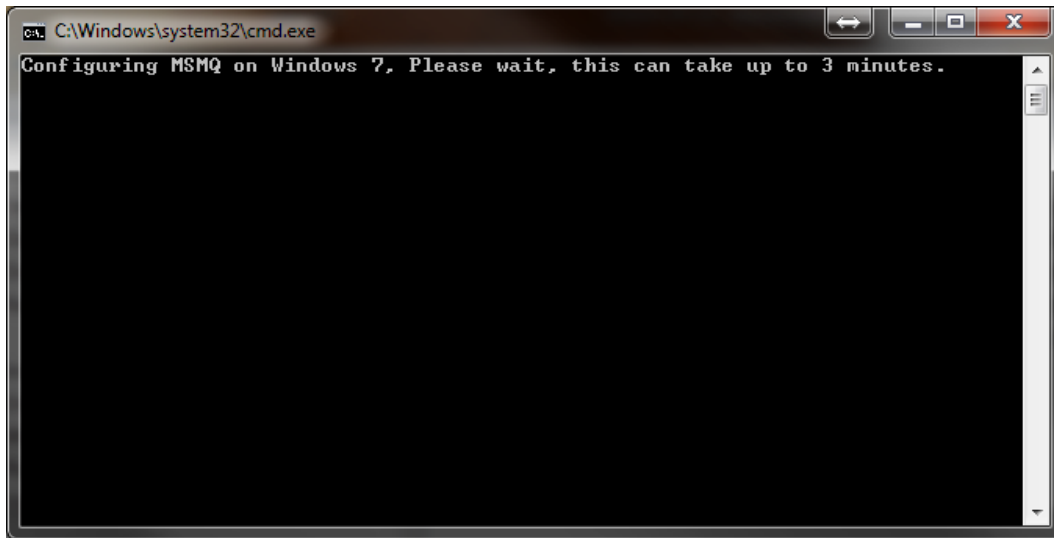
To begin the installation, click the button in the CD Menu that says: “Install KeyWatcher Touch Server”. If you experience an error when clicking this button, then you can manually start the installation by navigating to the CD/DVD ROM, and then double click the KWTServer folder. Double click on the “setup.vbs” file to begin the installation. (See below)



**** If the PC is running Windows XP ****

- First, click the “Install MSMQ(XP Only)” button
- Once that completes, then click the “Install KWTouch Server (XP Only) button

Please note: The following command prompt screen that may come up is related to the installation of the MSMQ feature within Windows. This may take up to 5 minutes to complete.



At this point, the following screen should be displayed:

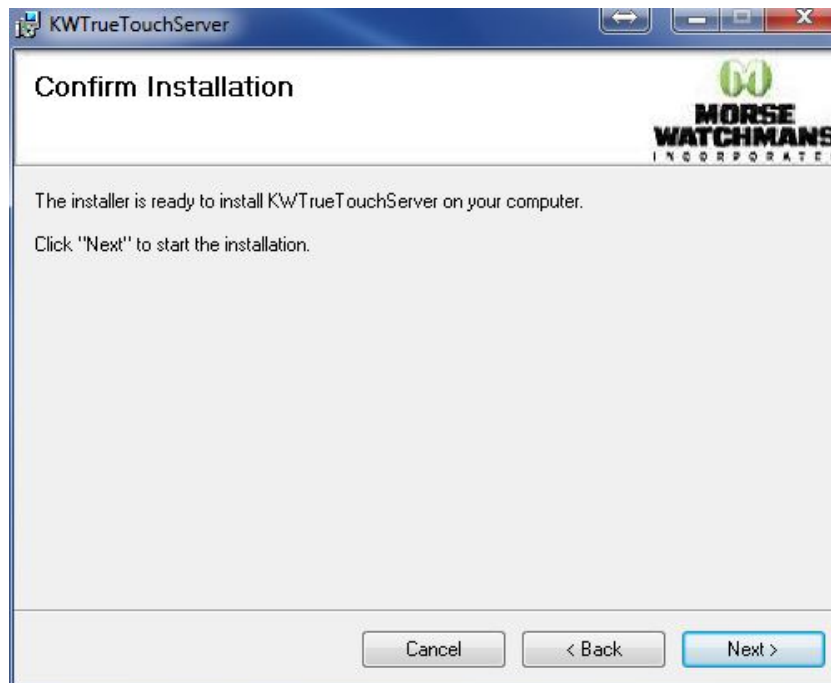


1. Click “Next” after selecting “I agree”.

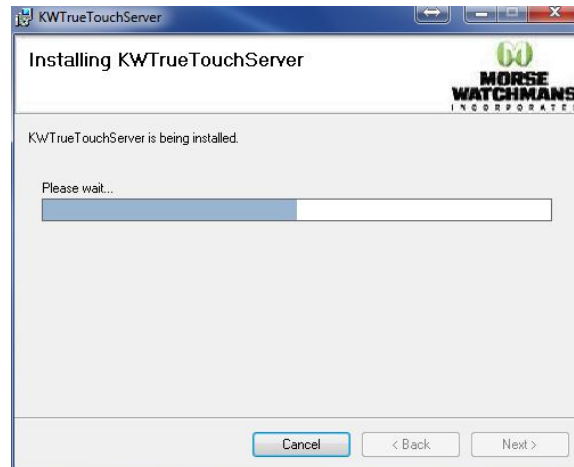
2. Click Next again, the following screen will be displayed:



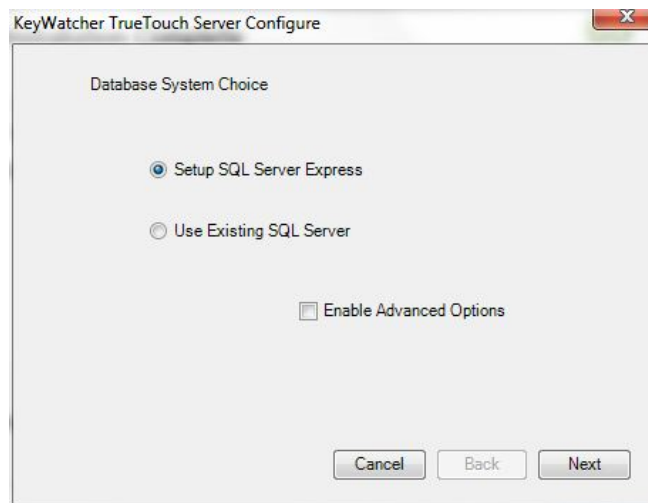
3. If the path of where the software is to be installed needs to be changed, do that here. It is recommended to install the software in this location and to not change it.
4. Click "Next". At the following screen, click next to begin the installation



5. The following screen will be shown during installation:

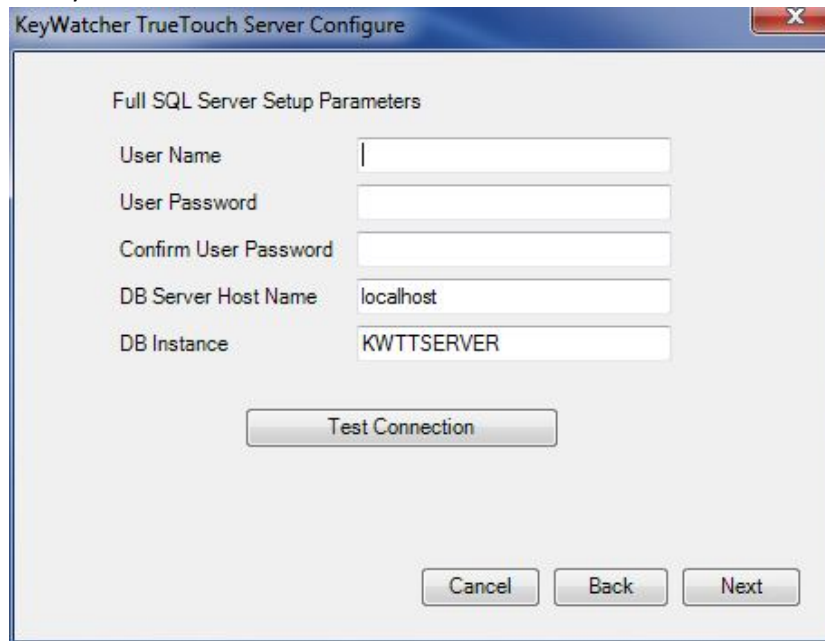


6. Once the installation of the KW Touch Server software has completed, setup will continue and a configuration screen will be shown, as seen below:



SQL Express or Use Existing SQL Server:

- a. Select “Setup SQL Express” if a SQL server is not available or if the server is going to operate solely off the PC (default) – Refer to Step 7
 - b. Select “Use Existing SQL Server” if you wish to use an existing SQL server on your network. Refer to Step 8
 - c. “Enable Advanced Options” – Checking this will allow a different user account to be utilized by the server. Also the port used can also be changed. (It is not recommended to change the port!)
7. “Setup SQL Express” If you choose this option, select it, then click “Next”. Go to Step 9
8. “Use Existing SQL Server” – If selecting this option, click “Next”. The following screen will be shown:

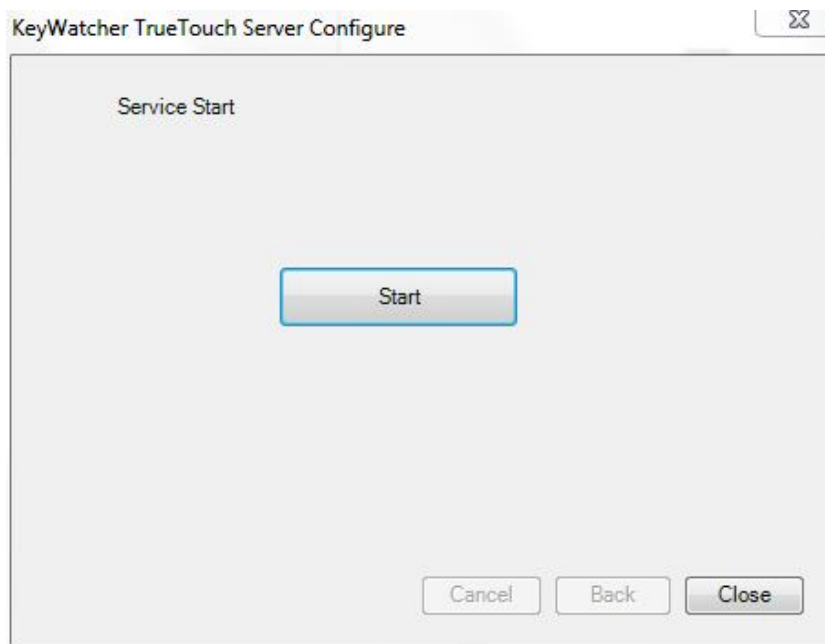


The image shows a Windows dialog box titled "KeyWatcher TrueTouch Server Configure". It contains a section titled "Full SQL Server Setup Parameters" with the following fields:

- User Name: []
- User Password: []
- Confirm User Password: []
- DB Server Host Name: localhost
- DB Instance: KWTTSERVER

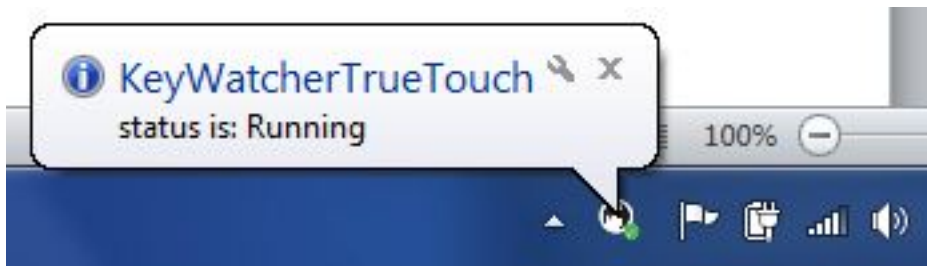
Below the fields is a "Test Connection" button. At the bottom of the dialog are "Cancel", "Back", and "Next" buttons.

- a. Fill in all requested information. Make sure the specified user name already exists on the SQL Server (If not it will need to be added!). This user will then need to be given DBO privileges to the two databases "KeyWatcherMain" and "KeyWatcherHistory" that are created. The DB Instance field can be left blank unless used by your SQL Server.
 - b. Click "Test Connection" to verify the connection (Screen will pop up with SQL Server Info), then click "Next".
9. Setup will now finish. Setup will install SQL Express if that option was specified, and once complete will show the following screen:



The image shows a Windows dialog box titled "KeyWatcher TrueTouch Server Configure". It contains a section titled "Service Start" with a "Start" button. At the bottom of the dialog are "Cancel", "Back", and "Close" buttons.

10. Click the “Start” button to start the KW Touch Server service. If the service successfully starts, the tray icon will show:



11. Click “Close” for both windows that are open – Installation of the KW Touch Server is complete!

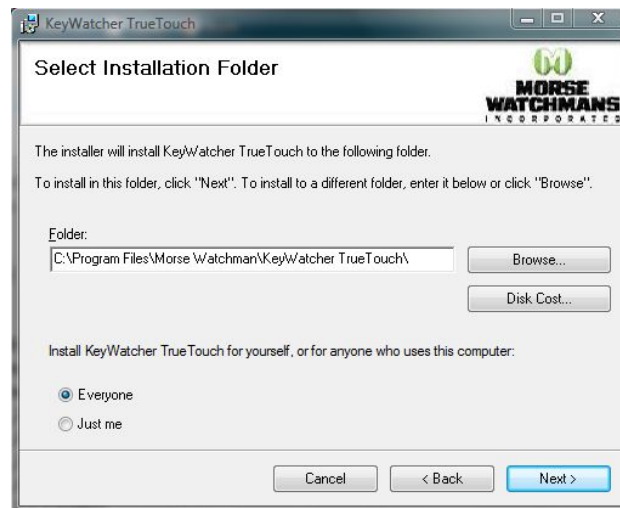
KW TrueTouch Install

Minimum PC Requirements

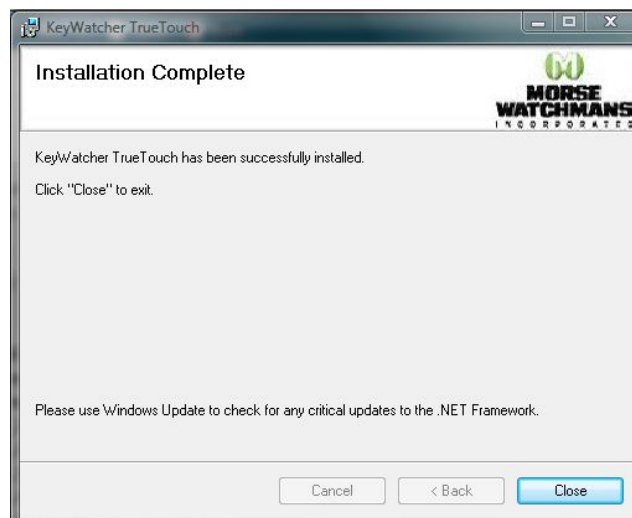
- Windows XP Professional, SP3 and all updates installed
- 1GB of Ram
- 100MB of free HD Space
- Pentium 4 processor

Installation

1. From the CD Menu, click the “Install KW TrueTouch Client Software” button.
2. Click “Next” at the welcome screen
3. At the “Select Installation Folder” screen, verify that the default path is ok for the installation. If it is not, you may select a different path.
 - Also, if everyone who logs into the computer should have the software available to them, then change from “Just Me” to “Everyone”



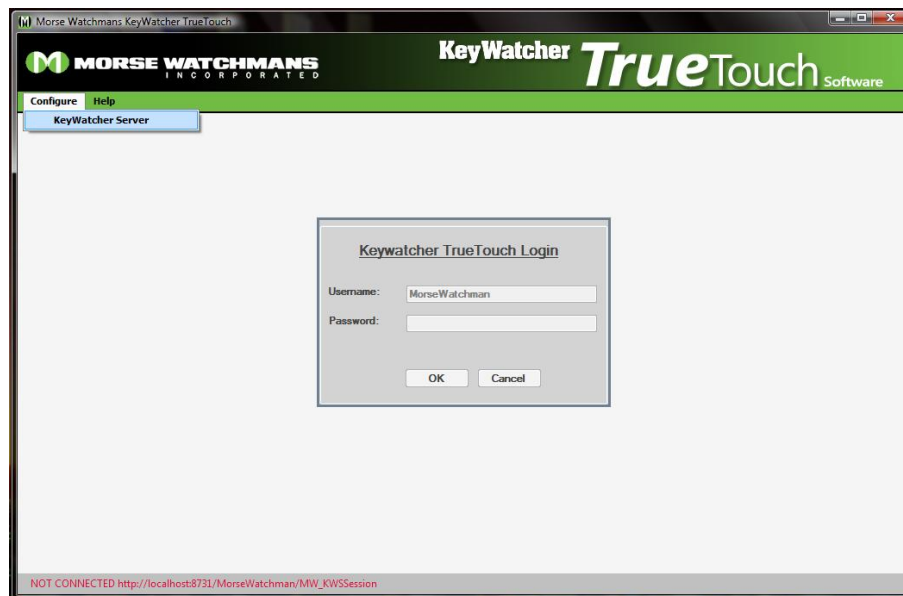
4. At the next screen, click next to confirm the installation. Watch the screen for the progress bar to be sure that it is installing properly.
5. Once the installation has finished, click next to close out of the installer.



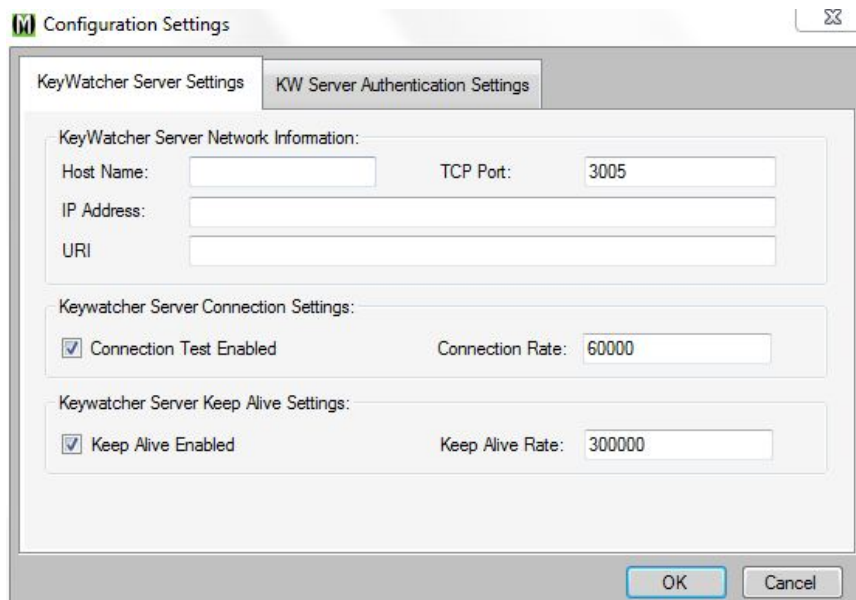
Configuring KW TrueTouch

The next step is configuring the software to connect to the KWT Server

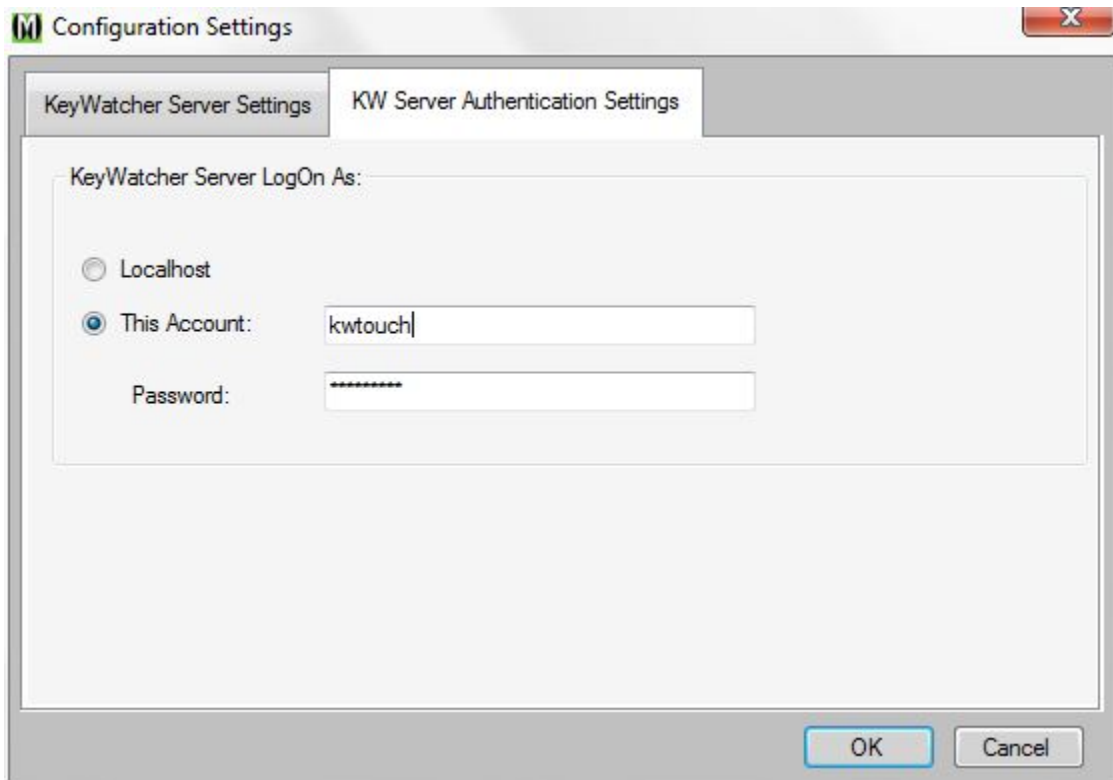
1. First, open the software by clicking on the icon on the desktop, or by navigating through the start menu (Start/All Programs/Morse Watchman/KeyWatcher TrueTouch)
2. The first time the software comes up, unless the software is being run on the same PC as the server, it will not show a connection on the lower line, and the text will be **red**. A connection error will be shown twice saying that the software cannot connect. Click “OK” each time.



3. Click the “Configure” drop down at the top of the screen, and select “KeyWatcher Server”. The following screen will be shown:



4. At this screen, only fill in the host name field
 - If TrueTouch is running on the same PC as the server, then leave this as “localhost”.
 - Note: If the software is not finding the server, enter in the name of the PC instead of leaving it setup as “localhost”.
 - If the KW Touch Server is running on a different PC, enter in the name of that PC under host name.
5. Click the “Authentication Settings” tab
 - If TrueTouch is running on the same PC as the server, then use “localhost”
 - If you are running this on a different PC, select “This Account”. These settings will be defaulted to the “KWTouch” user. This information will only need to be changed if a different account was specified during the server installation.



6. Click the OK button. The bottom of the screen should say connected.
 - The default user login for the software is:
 - Username: MorseWatchman
 - Password is left blank
7. Click “Ok” to login!

The software installation is now complete!